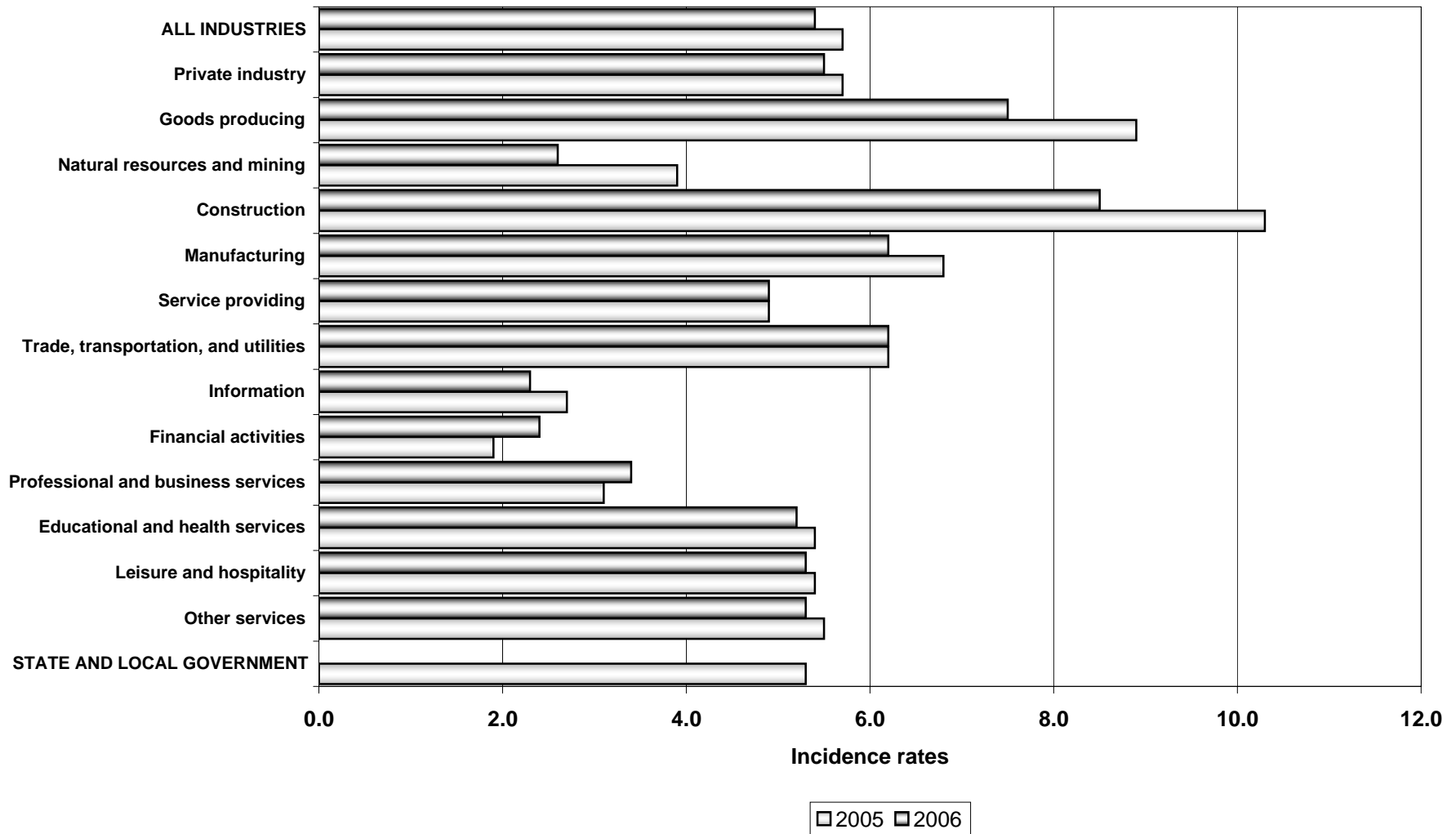
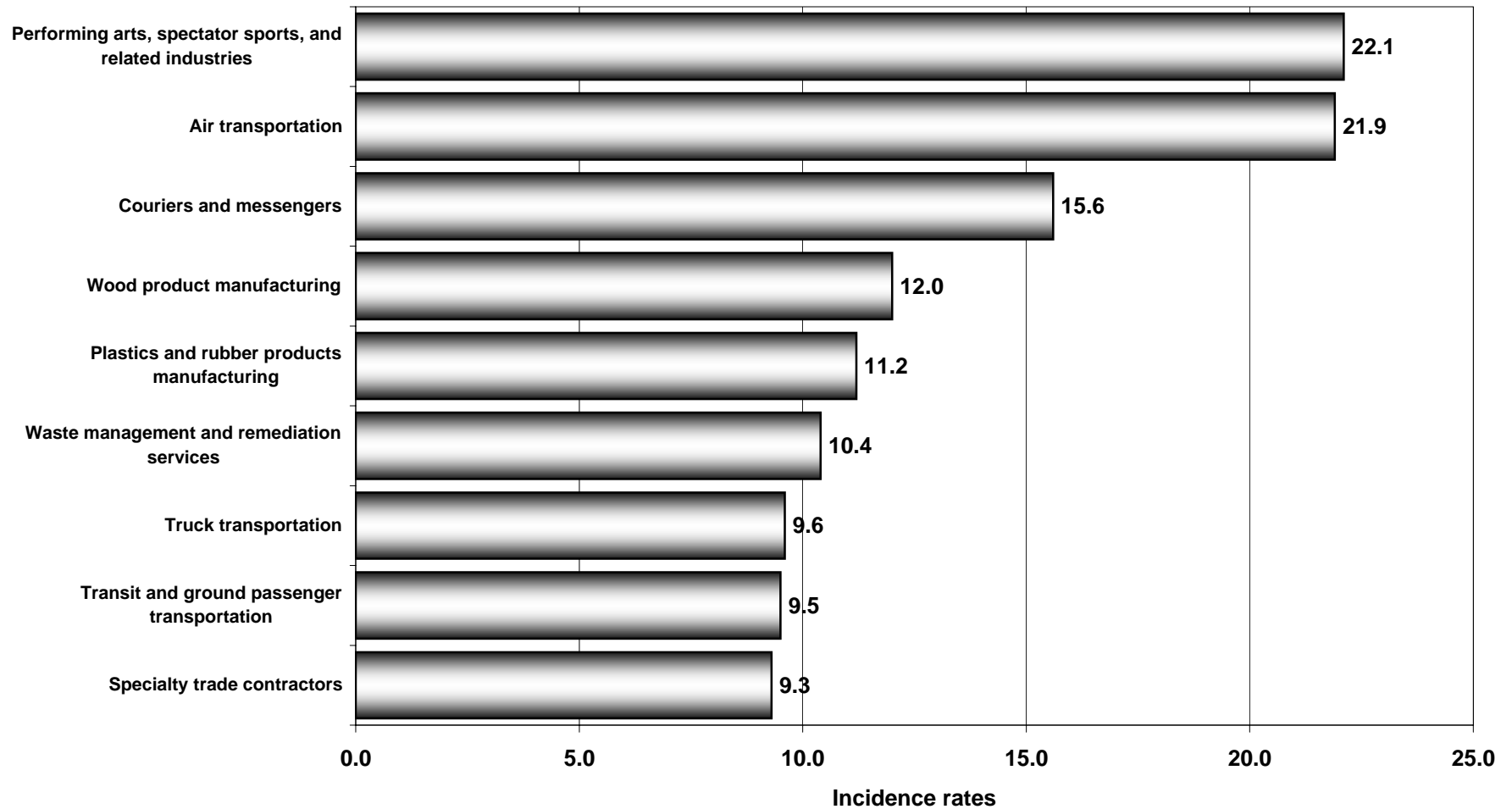


Chart 3. Incidence rates per 100 full-time workers for total nonfatal occupational injuries and illnesses by major industry sector, Nevada, 2005 & 2006



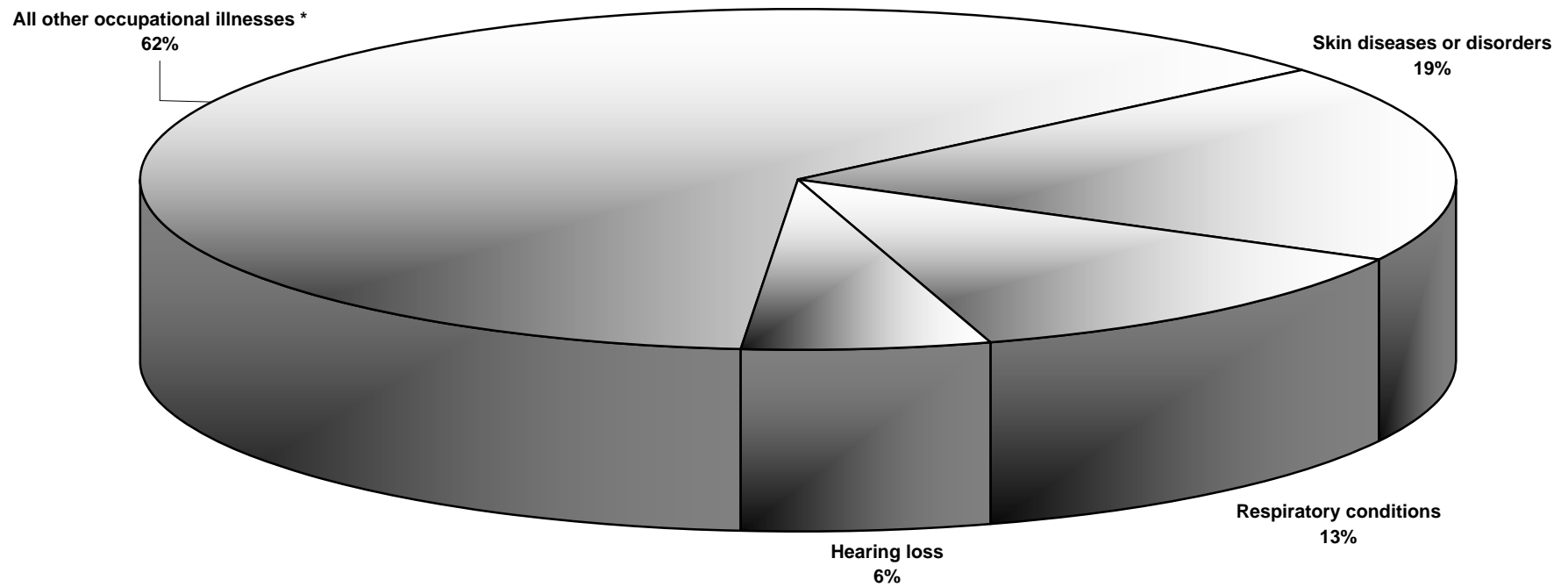
SOURCE: Bureau of Labor Statistics, U.S. Department of Labor, Survey of Occupational Injuries and Illnesses in cooperation with participating State agencies.

Chart 4. Major industries with the highest nonfatal occupational injury and illness incidence rates per 100 full-time employees for total cases, Nevada, 2006



SOURCE: Bureau of Labor Statistics, U.S. Department of Labor, Survey of Occupational Injuries and Illnesses in cooperation with participating State agencies.

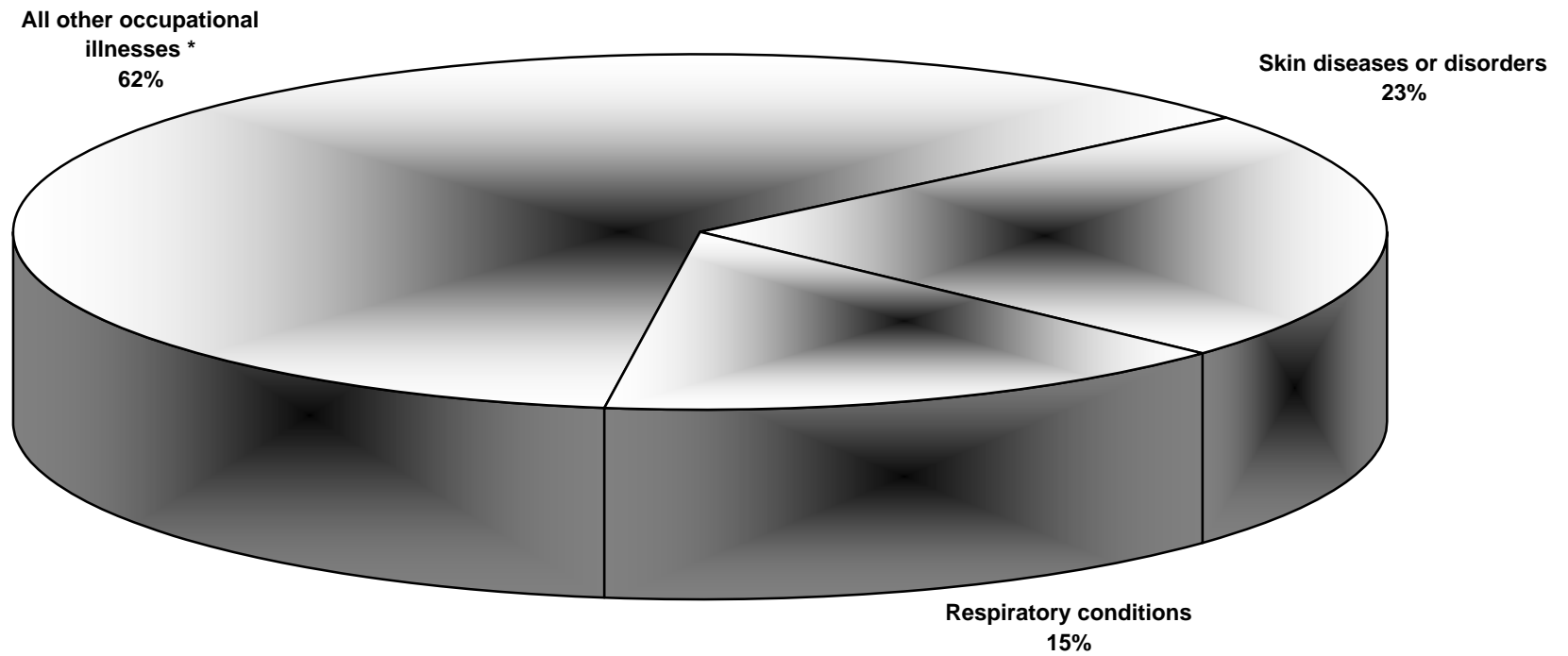
**Chart 5A. Distribution of injuries and illnesses by category of illness,
Nevada, all industries, 2006**



* All other occupational illnesses may include other categories not shown separately.

SOURCE: Bureau of Labor Statistics, U.S. Department of Labor, Survey of Occupational Injuries and Illnesses in cooperation with participating State agencies.

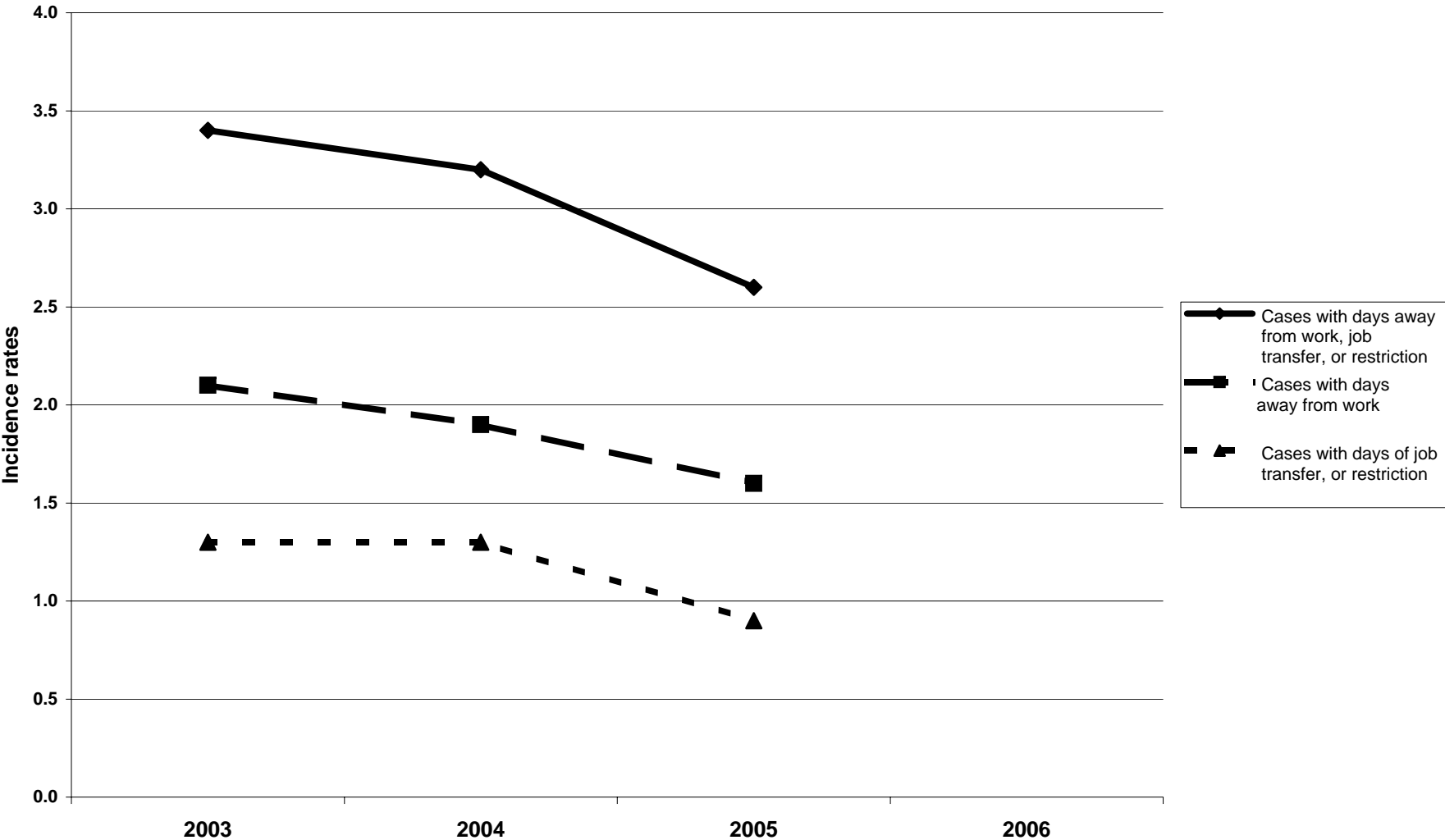
**Chart 5B. Distribution of injuries and illnesses by category of illness,
Nevada, private industry, 2006**



* All other occupational illnesses may include other categories not shown separately.

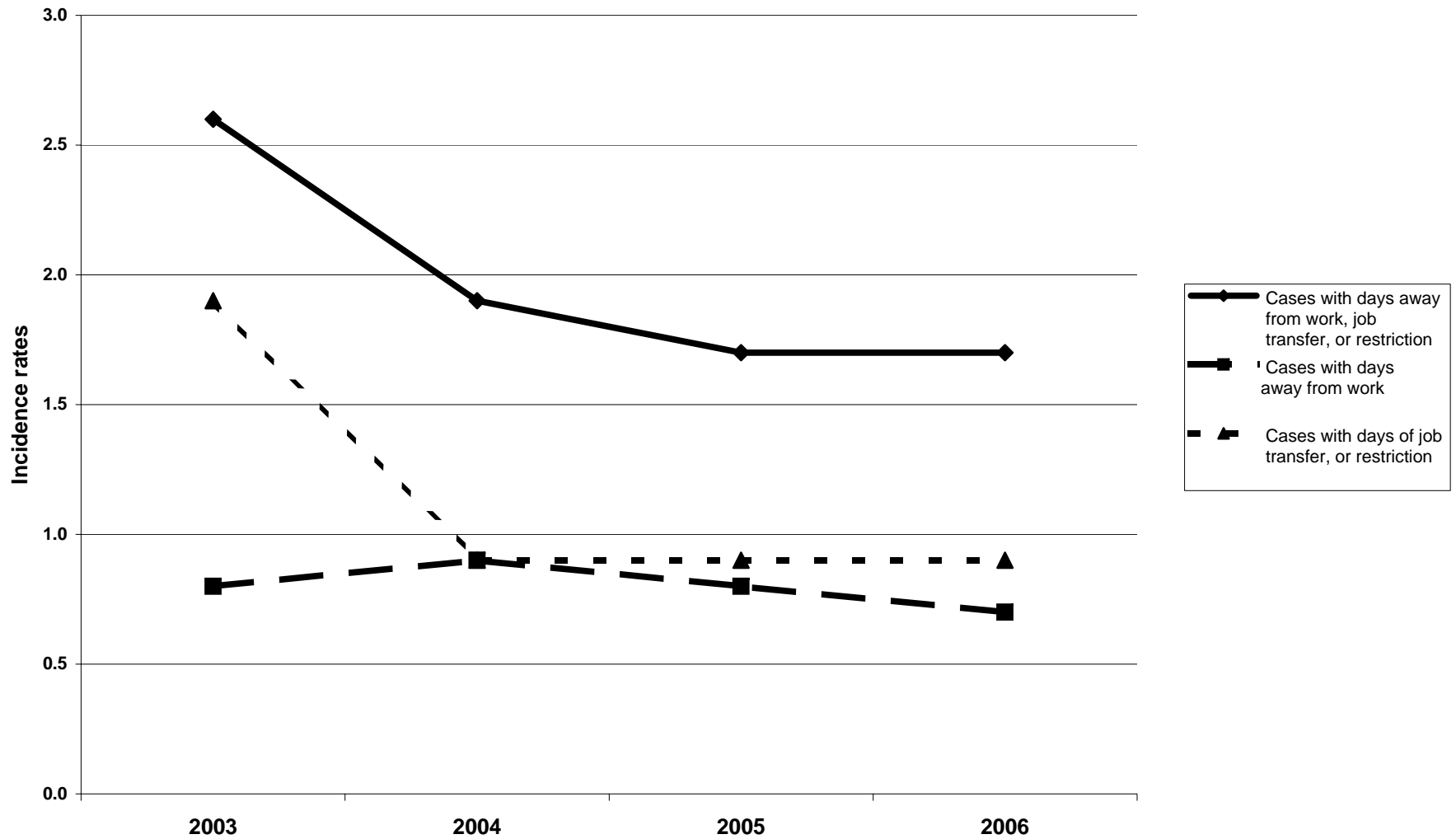
SOURCE: Bureau of Labor Statistics, U.S. Department of Labor, Survey of Occupational Injuries and Illnesses in cooperation with participating State agencies.

Chart 6A. Cases with days away from work, job transfer, or restriction incidence rates, injuries and illnesses, Nevada, local government, 2003-2006



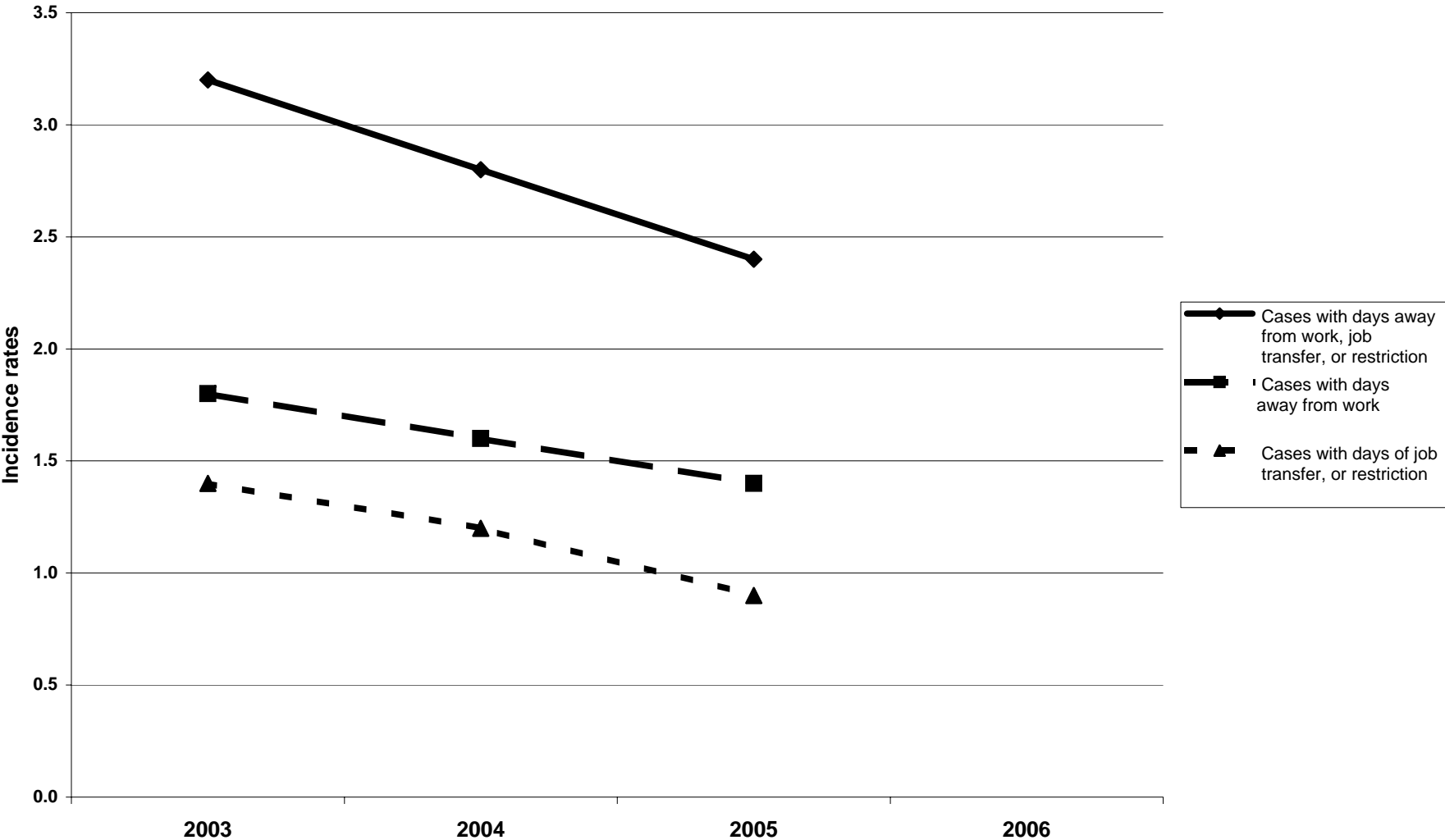
SOURCE: Bureau of Labor Statistics, U.S. Department of Labor, Survey of Occupational Injuries and Illnesses in cooperation with participating State agencies.

Chart 6B. Cases with days away from work, job transfer, or restriction incidence rates, injuries and illnesses, Nevada, state government, 2003-2006



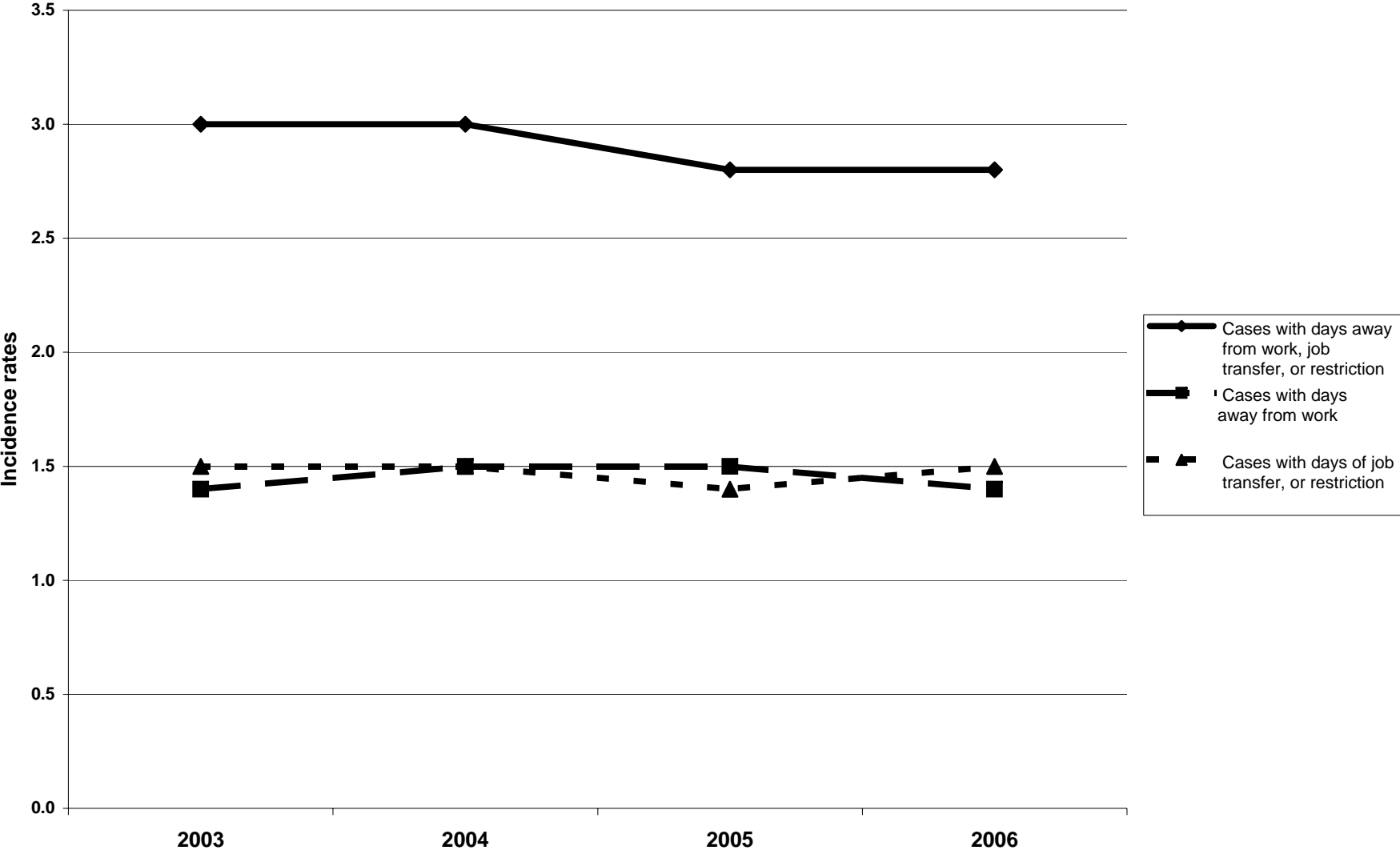
SOURCE: Bureau of Labor Statistics, U.S. Department of Labor, Survey of Occupational Injuries and Illnesses in cooperation with participating State agencies.

Chart 6C. Cases with days away from work, job transfer, or restriction incidence rates, injuries and illnesses, Nevada, state and local governments, 2003-2006



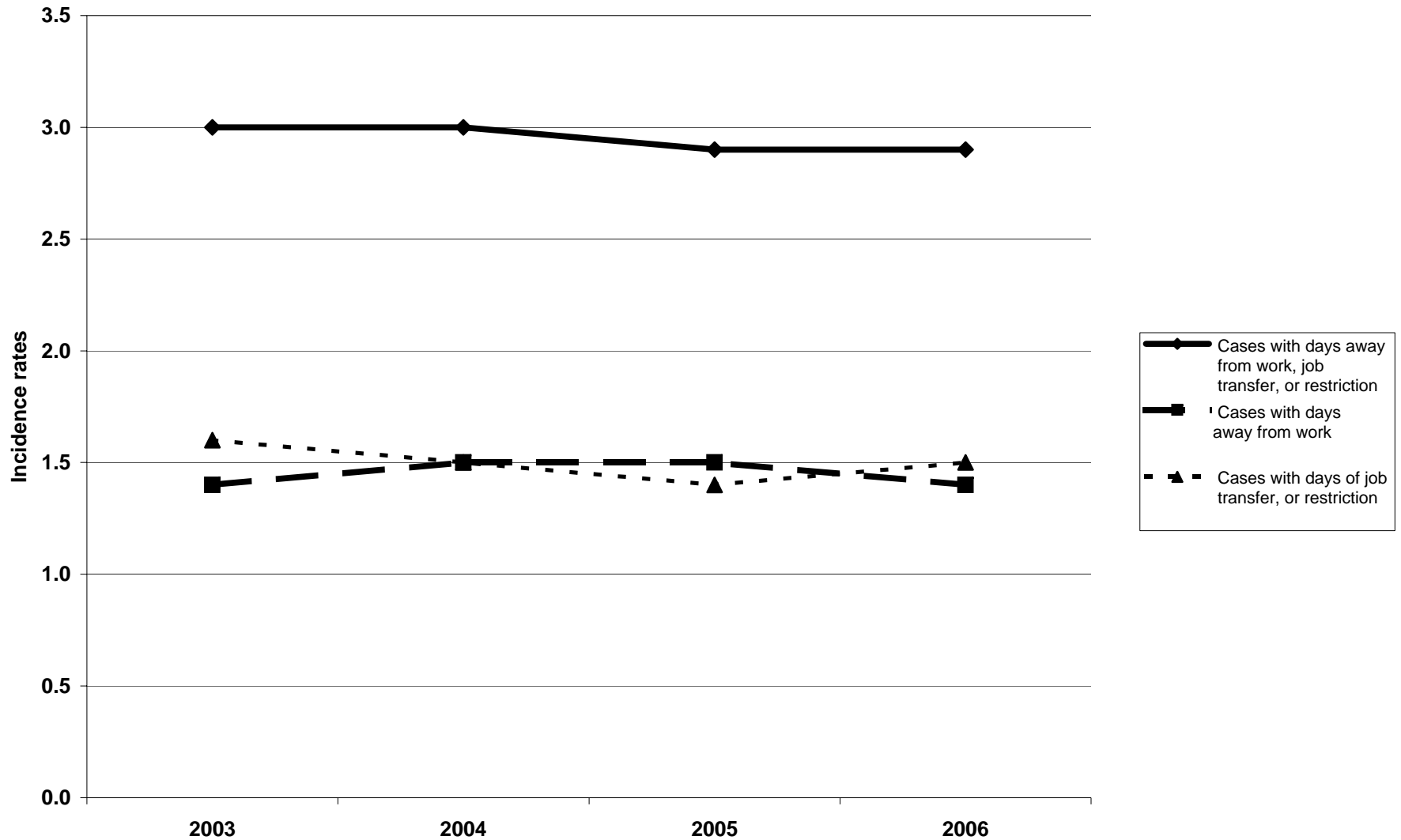
SOURCE: Bureau of Labor Statistics, U.S. Department of Labor, Survey of Occupational Injuries and Illnesses in cooperation with participating State agencies.

Chart 6D. Cases with days away from work, job transfer, or restriction incidence rates, injuries and illnesses, Nevada, all ownerships, 2003-2006



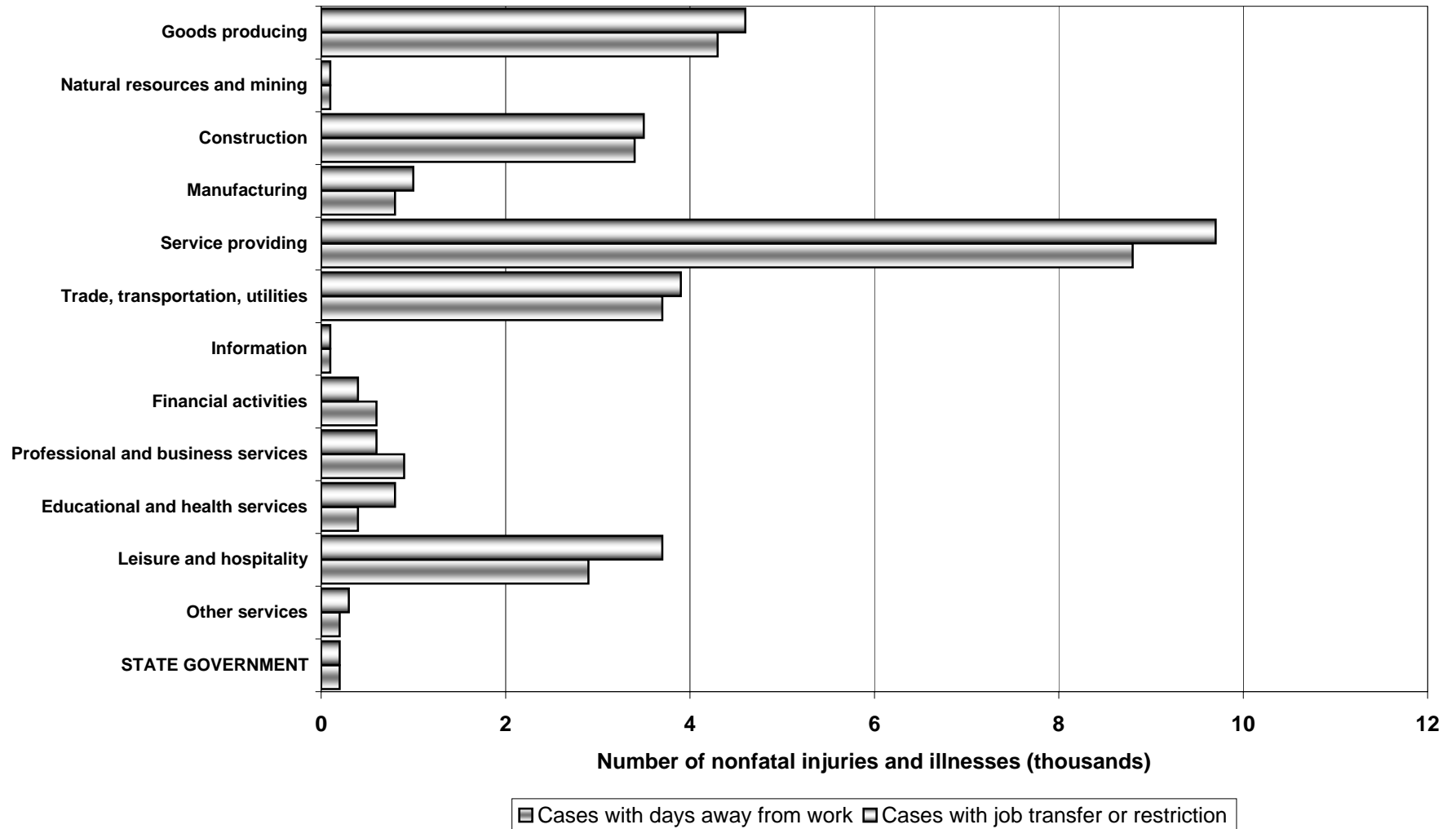
SOURCE: Bureau of Labor Statistics, U.S. Department of Labor, Survey of Occupational Injuries and Illnesses in cooperation with participating State agencies.

**Chart 6E. Cases with days away from work, job transfer, or restriction
incidence rates, injuries and illnesses, Nevada, private industry, 2003-2006**



SOURCE: Bureau of Labor Statistics, U.S. Department of Labor, Survey of Occupational Injuries and Illnesses in cooperation with participating State agencies.

Chart 7. Number of cases with days away from work, job transfer, or restriction, by case type and private major industry sectors, state government, Nevada, 2006



SOURCE: Bureau of Labor Statistics, U.S. Department of Labor, Survey of Occupational Injuries and Illnesses in cooperation with participating State agencies.