

## WCS Treating Panel Application

Microsoft Windows 10 ships with two browsers: Internet Explorer 11 (IE11) and the new Edge browser.

The Edge browser will be the default browser, and Internet Explorer 11 will be available to support legacy workflows. The new Edge browser will not have any support for ActiveX plug-ins. Therefore, the Acrobat/Reader plug-in won't work with Edge.

If you Click on the Treating Panel Application link on the website, it may open in the browser window.

**DO NOT FILL OUT THE APPLICATION FROM A BROWSER WINDOW.**

### Save the Treating Panel Application to use with Adobe Reader

Using Edge or IE11

Right Click on the Treating Panel Application link on the website and choose *Save target as...*

Choose a folder and save the .pdf application.

Now open the .pdf with Adobe Acrobat or Adobe Acrobat Reader.

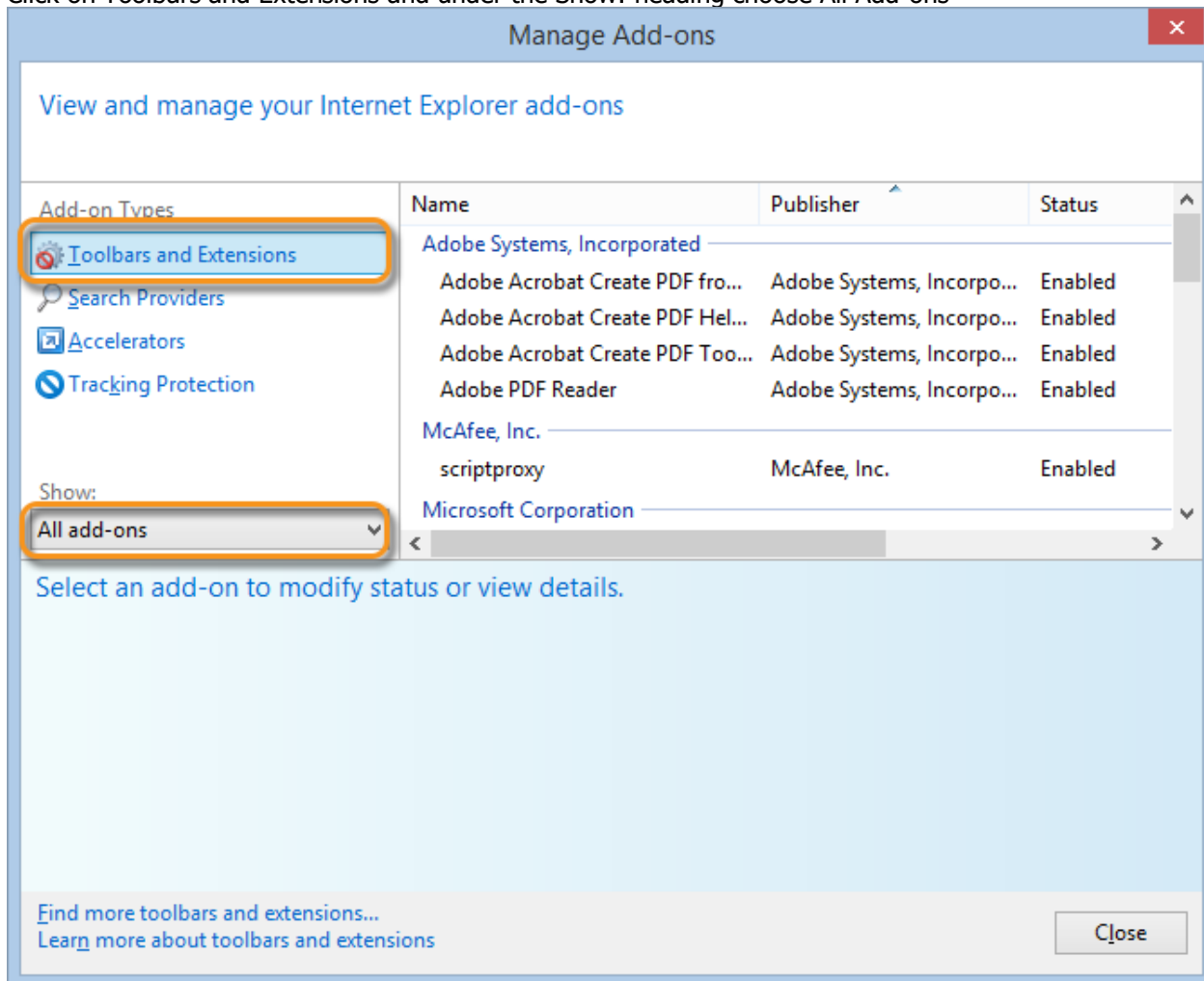
Fill out the form and do a *File->Save As* to save a copy of the application to send to WCS.

### Set IE11 to use Adobe when opening a .pdf

Open IE11

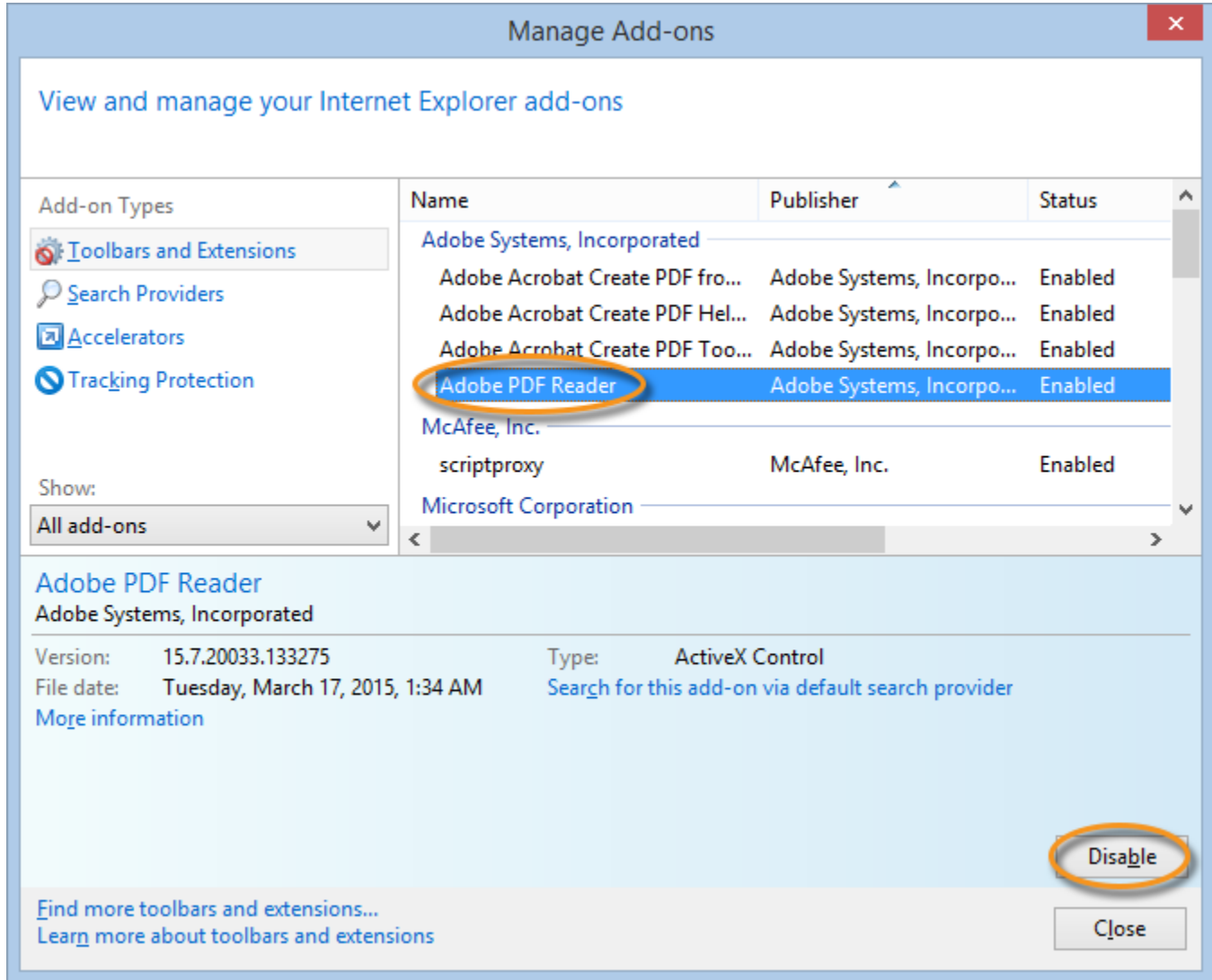
Choose *Tools->Manage Add-ons* or hit the Settings Gear in the upper right and choose *Manage Add-ons*

Click on *Toolbars and Extensions* and under the *Show:* heading choose *All Add-ons*



## WCS Treating Panel Application

Click on Adobe PDF Reader Add-on and Disable it.



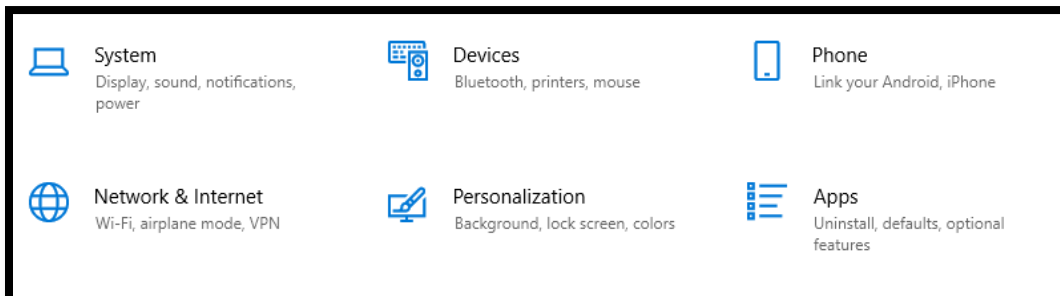
Restart your browser and when you click on a .pdf link it should ask you to Open or Save the file.

## Make Adobe your Default .pdf Reader

In Windows 10

Hit the Start button and choose the Settings Gear

From the Settings choose Apps

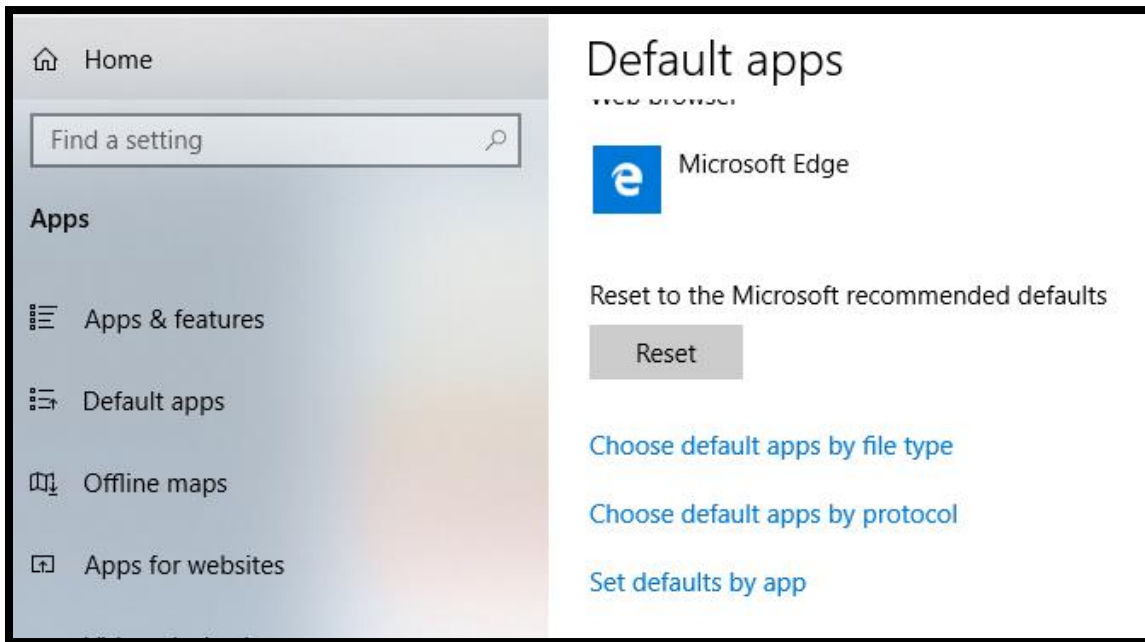


## WCS Treating Panel Application

---

On the Apps window Click on [Default Apps](#)

Scroll down and click on [Choose default apps by file type](#)



Scroll down to .pdf and choose [Adobe Acrobat](#) as the application to open this file type.